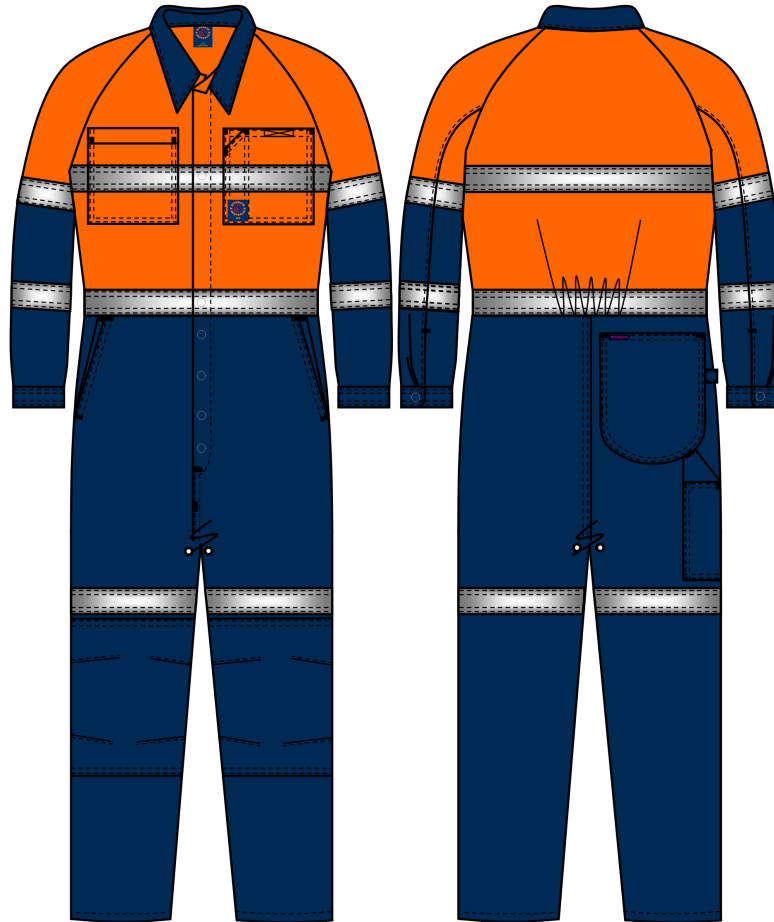


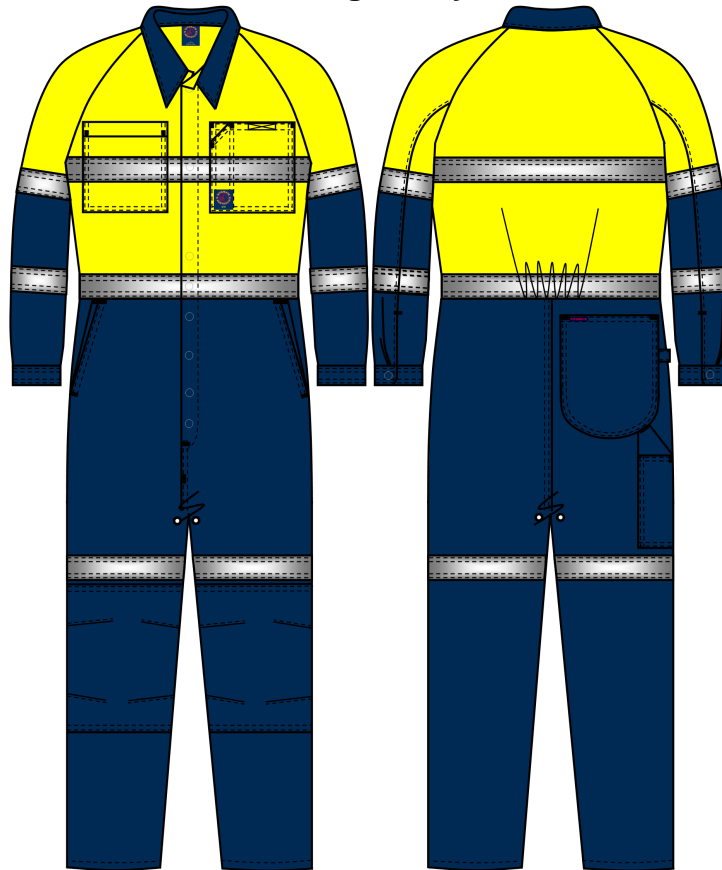
Ritemate Workwear Coverall

RM908CR 2 Tone Coverall with Reflective Tape

COMMERCIAL IN CONFIDENCE



Orange-Navy



Yellow-Navy



Features

- Superior Garment Assembly, Twin Needle Stitching and Bar- tacks for Extra Strength
- Quality Rivet Press Studs
- Quality YKK Zippers
- Garments with Sleeves Comply with AS 4399:2020 Standard for UPF50+
- AS/NZS 4602.1:2011 and AS/NZS 1906:4:2023 for High Visibility Day/Night Wear

Fabric

Cotton Twill, 311gsm

Colour

Orange-Navy Yellow-Navy

Tape Configuration **Reflective Tape 50mm**

Two Hoops on Body
 One Hoop on Either Side Sleeve Arms
 One Hoop on Either Side of Leg Panel Knee Area

Hi Visibility Application

Day time Night time

Size Range

77R - 112R 87S - 127S

Fabric Quality

Dimension Stability		+/-3%
Colour Fastness to Washing	Colour Change	4
	Colour Staining	4-5
Colour Fastness to Rubbing	Dry	3-4
	Wet	2-3
Colour Fastness to Light		4-5
Tearing Strength	Warp	>=25 min N
	Weft	>=21 min N
UPF (AS 4399:2020)		50+

Measurement Table

Major Points	Regular Fit								
	77R	82R	87R	92R	97R	102R	107R	112R	
1/2 Chest	51	54.5	56.5	60	62.5	65.5	68	70	
1/2 Waist Extended	46.5	50	52	55	57.5	59.5	62	65	
1/2 Hip	52	54.5	57	59.5	62	64.5	67	69.5	
CB Neck to Crotch	82	86	89	93	97	100	104	107	
Under Sleeve length	47	48	49	50	51	53	55	56	
Inseam	71	74	76	78	80	82	84	85	

Major Points	Stout Fit								
	87S	92S	97S	102S	107S	112S	117S	122S	127S
1/2 Chest	53.5	57	59	61.5	64	66.5	69	71.5	74
1/2 Waist Extended	51	63.5	56.5	58	61	63.5	66	68.5	71
1/2 Hip	55.5	58	60.5	63	65	67.5	70	72.5	75
CB Neck to Crotch	82	85	89	93	96	98	100	101	103
Under Sleeve length	48	48	49	49	50	51	51	52	52
Inseam	67	70	72	75	77	78	78	78	78